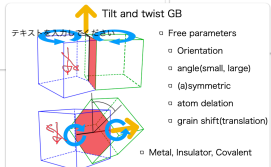
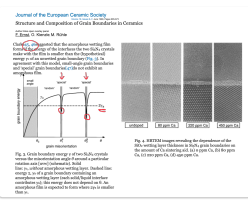
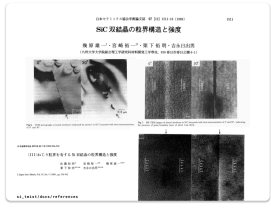


GB general knowledge



By Slinky Puppet, CC BY-SA 3.0, <https://commons.wikimedia.org/w/index.php?curid=25101019>



Interfaces in Crystalline Materials

A.P. Sutton and R.W. Balluffi

819ページ

Idea of T_c (compensation temperature)

SuttonBalluffi 4.3.1.5 p.275

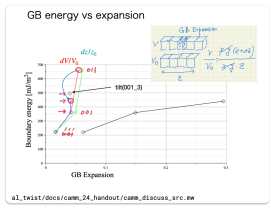
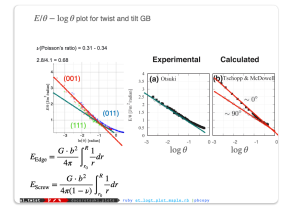
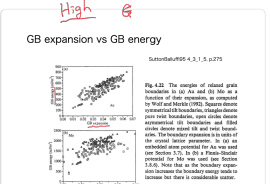


Table 4.1 Interface energies

Orientation	(111)	(001)	(110)
exp[143]	-10.663	-10.374	-7.439
exp[143]	-10.616	-10.339	-7.402
exp[143]	-10.569	-10.299	-7.365
exp[143]	-10.522	-10.259	-7.328
exp[143]	-10.475	-10.219	-7.291
exp[143]	-10.428	-10.179	-7.254
exp[143]	-10.381	-10.139	-7.217
exp[143]	-10.334	-10.099	-7.180
exp[143]	-10.287	-10.059	-7.143
exp[143]	-10.240	-10.019	-7.106
exp[143]	-10.193	-9.979	-7.069
exp[143]	-10.146	-9.939	-7.032
exp[143]	-10.099	-9.899	-6.995
exp[143]	-10.052	-9.859	-6.958
exp[143]	-10.005	-9.819	-6.921
exp[143]	-9.958	-9.779	-6.884
exp[143]	-9.911	-9.739	-6.847
exp[143]	-9.864	-9.699	-6.810
exp[143]	-9.817	-9.659	-6.773
exp[143]	-9.770	-9.619	-6.736
exp[143]	-9.723	-9.579	-6.699
exp[143]	-9.676	-9.539	-6.662
exp[143]	-9.629	-9.499	-6.625
exp[143]	-9.582	-9.459	-6.588
exp[143]	-9.535	-9.419	-6.551
exp[143]	-9.488	-9.379	-6.514
exp[143]	-9.441	-9.339	-6.477
exp[143]	-9.394	-9.299	-6.440
exp[143]	-9.347	-9.259	-6.403
exp[143]	-9.300	-9.219	-6.366
exp[143]	-9.253	-9.179	-6.329
exp[143]	-9.206	-9.139	-6.292
exp[143]	-9.159	-9.099	-6.255
exp[143]	-9.112	-9.059	-6.218
exp[143]	-9.065	-9.019	-6.181
exp[143]	-9.018	-8.979	-6.144
exp[143]	-8.971	-8.939	-6.107
exp[143]	-8.924	-8.899	-6.070
exp[143]	-8.877	-8.859	-6.033
exp[143]	-8.830	-8.819	-5.996
exp[143]	-8.783	-8.779	-5.959
exp[143]	-8.736	-8.739	-5.922
exp[143]	-8.689	-8.699	-5.885
exp[143]	-8.642	-8.659	-5.848
exp[143]	-8.595	-8.619	-5.811
exp[143]	-8.548	-8.579	-5.774
exp[143]	-8.501	-8.539	-5.737
exp[143]	-8.454	-8.499	-5.700
exp[143]	-8.407	-8.459	-5.663
exp[143]	-8.360	-8.419	-5.626
exp[143]	-8.313	-8.379	-5.589
exp[143]	-8.266	-8.339	-5.552
exp[143]	-8.219	-8.299	-5.515
exp[143]	-8.172	-8.259	-5.478
exp[143]	-8.125	-8.219	-5.441
exp[143]	-8.078	-8.179	-5.404
exp[143]	-8.031	-8.139	-5.367
exp[143]	-7.984	-8.099	-5.330
exp[143]	-7.937	-8.059	-5.293
exp[143]	-7.890	-8.019	-5.256
exp[143]	-7.843	-7.979	-5.219
exp[143]	-7.796	-7.939	-5.182
exp[143]	-7.749	-7.899	-5.145
exp[143]	-7.702	-7.859	-5.108
exp[143]	-7.655	-7.819	-5.071
exp[143]	-7.608	-7.779	-5.034
exp[143]	-7.561	-7.739	-4.997
exp[143]	-7.514	-7.699	-4.960
exp[143]	-7.467	-7.659	-4.923
exp[143]	-7.420	-7.619	-4.886
exp[143]	-7.373	-7.579	-4.849
exp[143]	-7.326	-7.539	-4.812
exp[143]	-7.279	-7.499	-4.775
exp[143]	-7.232	-7.459	-4.738
exp[143]	-7.185	-7.419	-4.701
exp[143]	-7.138	-7.379	-4.664
exp[143]	-7.091	-7.339	-4.627
exp[143]	-7.044	-7.299	-4.590
exp[143]	-6.997	-7.259	-4.553
exp[143]	-6.950	-7.219	-4.516
exp[143]	-6.903	-7.179	-4.479
exp[143]	-6.856	-7.139	-4.442
exp[143]	-6.809	-7.099	-4.405
exp[143]	-6.762	-7.059	-4.368
exp[143]	-6.715	-7.019	-4.331
exp[143]	-6.668	-6.979	-4.294
exp[143]	-6.621	-6.939	-4.257
exp[143]	-6.574	-6.899	-4.220
exp[143]	-6.527	-6.859	-4.183
exp[143]	-6.480	-6.819	-4.146
exp[143]	-6.433	-6.779	-4.109
exp[143]	-6.386	-6.739	-4.072
exp[143]	-6.339	-6.699	-4.035
exp[143]	-6.292	-6.659	-4.000
exp[143]	-6.245	-6.619	-3.963
exp[143]	-6.198	-6.579	-3.926
exp[143]	-6.151	-6.539	-3.889
exp[143]	-6.104	-6.499	-3.852
exp[143]	-6.057	-6.459	-3.815
exp[143]	-6.010	-6.419	-3.778
exp[143]	-5.963	-6.379	-3.741
exp[143]	-5.916	-6.339	-3.704
exp[143]	-5.869	-6.299	-3.667
exp[143]	-5.822	-6.259	-3.630
exp[143]	-5.775	-6.219	-3.593
exp[143]	-5.728	-6.179	-3.556
exp[143]	-5.681	-6.139	-3.519
exp[143]	-5.634	-6.099	-3.482
exp[143]	-5.587	-6.059	-3.445
exp[143]	-5.540	-6.019	-3.408
exp[143]	-5.493	-5.979	-3.371
exp[143]	-5.446	-5.939	-3.334
exp[143]	-5.399	-5.899	-3.297
exp[143]	-5.352	-5.859	-3.260
exp[143]	-5.305	-5.819	-3.223
exp[143]	-5.258	-5.779	-3.186
exp[143]	-5.211	-5.739	-3.149
exp[143]	-5.164	-5.699	-3.112
exp[143]	-5.117	-5.659	-3.075
exp[143]	-5.070	-5.619	-3.038
exp[143]	-5.023	-5.579	-3.001
exp[143]	-4.976	-5.539	-2.964
exp[143]	-4.929	-5.499	-2.927
exp[143]	-4.882	-5.459	-2.890
exp[143]	-4.835	-5.419	-2.853
exp[143]	-4.788	-5.379	-2.816
exp[143]	-4.741	-5.339	-2.779
exp[143]	-4.694	-5.299	-2.742
exp[143]	-4.647	-5.259	-2.705
exp[143]	-4.600	-5.219	-2.668
exp[143]	-4.553	-5.179	-2.631
exp[143]	-4.506	-5.139	-2.594
exp[143]	-4.459	-5.099	-2.557
exp[143]	-4.412	-5.059	-2.520
exp[143]	-4.365	-5.019	-2.483
exp[143]	-4.318	-4.979	-2.446
exp[143]	-4.271	-4.939	-2.409
exp[143]	-4.224	-4.899	-2.372
exp[143]	-4.177	-4.859	-2.335
exp[143]	-4.130	-4.819	-2.298
exp[143]	-4.083	-4.779	-2.261
exp[143]	-4.036	-4.739	-2.224
exp[143]	-3.989	-4.699	-2.187
exp[143]	-3.942	-4.659	-2.150
exp[143]	-3.895	-4.619	-2.113
exp[143]	-3.848	-4.579	-2.076
exp[143]	-3.801	-4.539	-2.039
exp[143]	-3.754	-4.499	-2.002
exp[143]	-3.707	-4.459	-1.965
exp[143]	-3.660	-4.419	-1.928
exp[143]	-3.613	-4.379	-1.891
exp[143]	-3.566	-4.339	-1.854
exp[143]	-3.519	-4.299	-1.817
exp[143]	-3.472	-4.259	-1.780
exp[143]	-3.425	-4.219	-1.743
exp[143]	-3.378	-4.179	-1.706
exp[143]	-3.331	-4.139	-1.669

